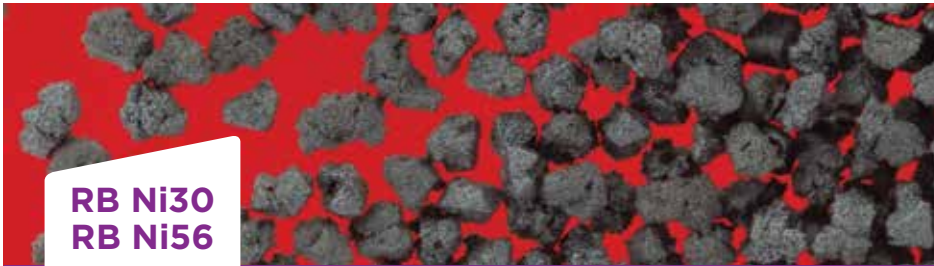


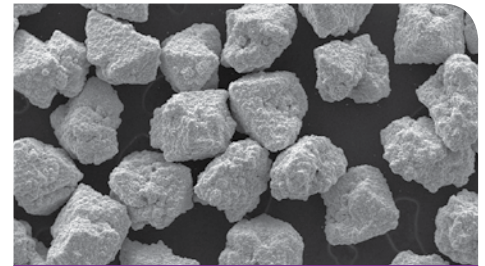


ENGINEERED PARTICLES / COATED MESH DIAMOND POWDERS

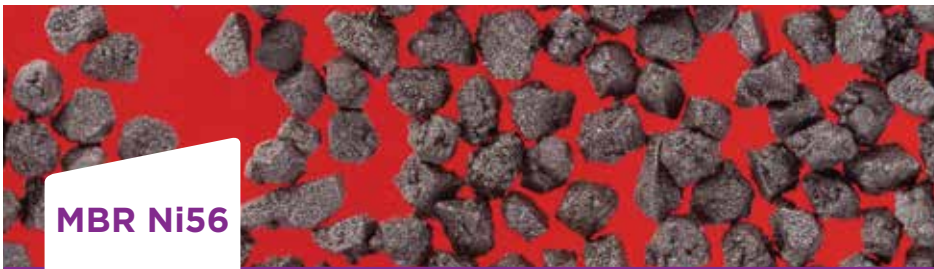
Coated Mesh Diamond Powders — RB Ni30, RB Ni56, MBR Ni56, RB Cu50



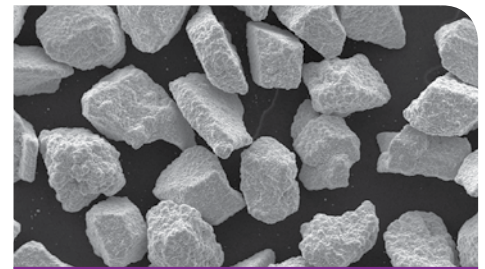
RB Ni30
RB Ni56



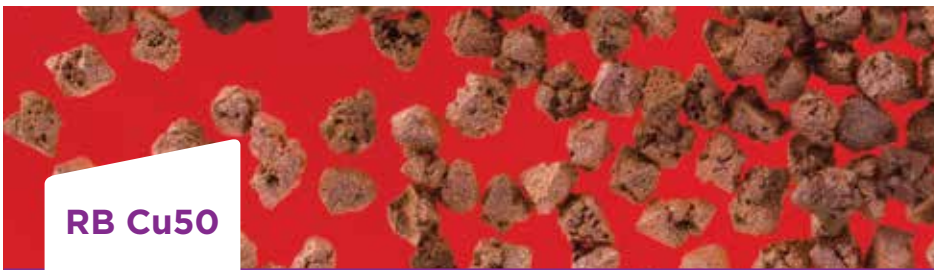
The RB crystal is available with both 30% and 56% electroless nickel coatings for phenolic and polyimide resin bond systems. The coating significantly improves the mechanical adhesion of the diamond and bond leading to increased G ratio for wheels in a broad range of grinding applications. Saint-Gobain's nickel coating is the most consistent in the industry, with an optimized surface roughness and balance between ductile and brittle characteristics.



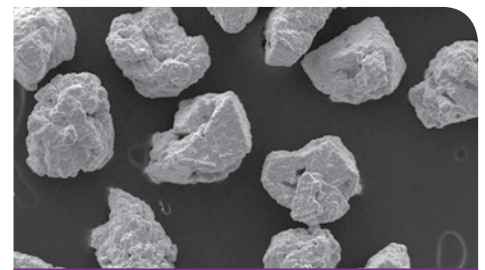
MBR Ni56



MBR is available with the same electroless nickel coating used on our RB crystals. It further enhances the retention of diamond in the resin bond by increasing the surface area of these more blocky crystals and is particularly helpful in high stock removal applications where coolant is used.



RB Cu50



A 50% by weight copper coating designed for both phenolic and polyimide resin bond systems with moderate and high levels of copper filler. The copper coating allows for rapid removal of heat in the grinding zone, providing for better cooling and less burn in sensitive applications like fluting small rotary tools and end work, and high stock removal fluting from solid blanks. It is also commonly used in dry grinding operations with lighter stock removal where heat can be a problem. Saint-Gobain's copper coating is stabilized and packaged to reduce oxidation prior to use.



ISO CERTIFIED
9001:2008 and
14001:2004



1401 East Lackawanna Street
Mid-Valley Industrial Park
Olyphant, PA 18447

USA

Tel: +1 570 383 3261 Fax: +1 570 383 3218

surfaceconditioning.saint-gobain.com

SURFACE CONDITIONING

