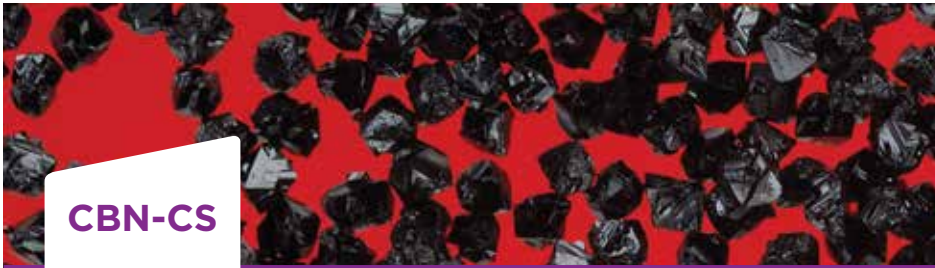


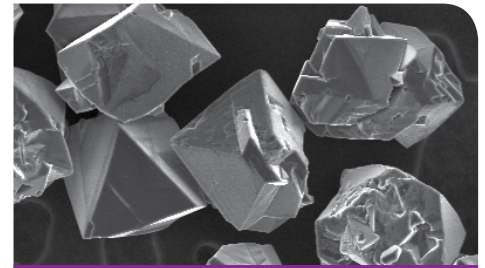


ENGINEERED PARTICLES / CUBIC BORON NITRIDE (CBN)

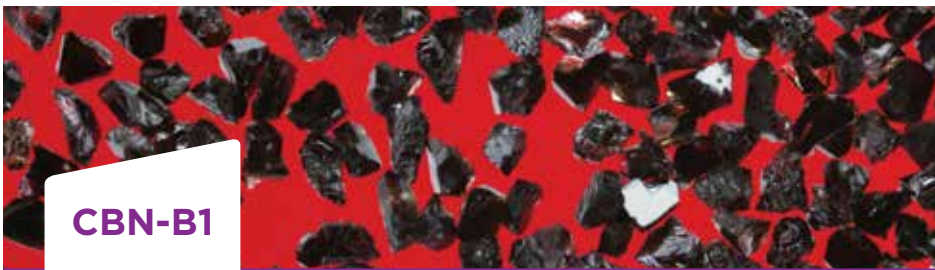
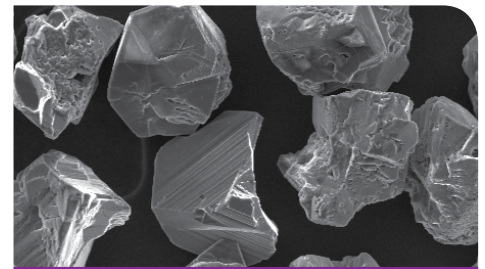
Cubic Boron Nitride (CBN) — CBN-CS, CBN-KB, CBN-B1



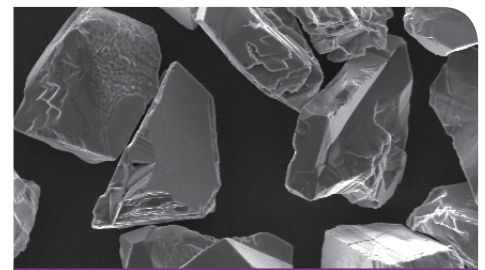
A newly developed black, irregular shaped crystal structure designed for low force, low temperature vitrified and resin grinding applications where free cutting and low cost are most important. Most particles macro fracture but expose multiple cutting edges.



A black, irregular shaped crystal with some very sharp particles. Good strength makes it ideal for both resin and vitrified bond wheels. This low-cost, high-value grain provides superior performance in the newer ceramic vitrified bonds in a wide range of applications.



A black-colored crystal, with a monocrystalline morphology and angular shape with many sharp points. With medium, consistent toughness, it is the most common CBN used in both resin and vitrified bond wheels in a wide range of low and medium force grinding applications, providing the best blend of stock removal, low forces and cost. It is the most popular choice for resin bond systems when coated with 60% nickel, providing a 30% wheel life improvement over uncoated CBN-B1.



 **ISO CERTIFIED**
9001:2008 and
14001:2004

 **ABC**
Superabrasives

 **WARREN**
Superabrasives


USA
1401 East Lackawanna Street
Mid-Valley Industrial Park
Olyphant, PA 18447
Tel: +1 570 383 3261 Fax: +1 570 383 3218


CHINA
No. 8, Xinkai Street
Econ. Dev. Zone 056107
Handan, Hebei, China
Tel: +86 310 806 6053 Fax: +86 310 806 6022

surfaceconditioning.saint-gobain.com

SURFACE CONDITIONING

©2017 Saint-Gobain Surface Conditioning, CBN1-11/17-HIVE


SAINT-GOBAIN