

FOUNDRY
SYSTEMS

SAINT-GOBAIN FOUNDRY MONOLITHICS

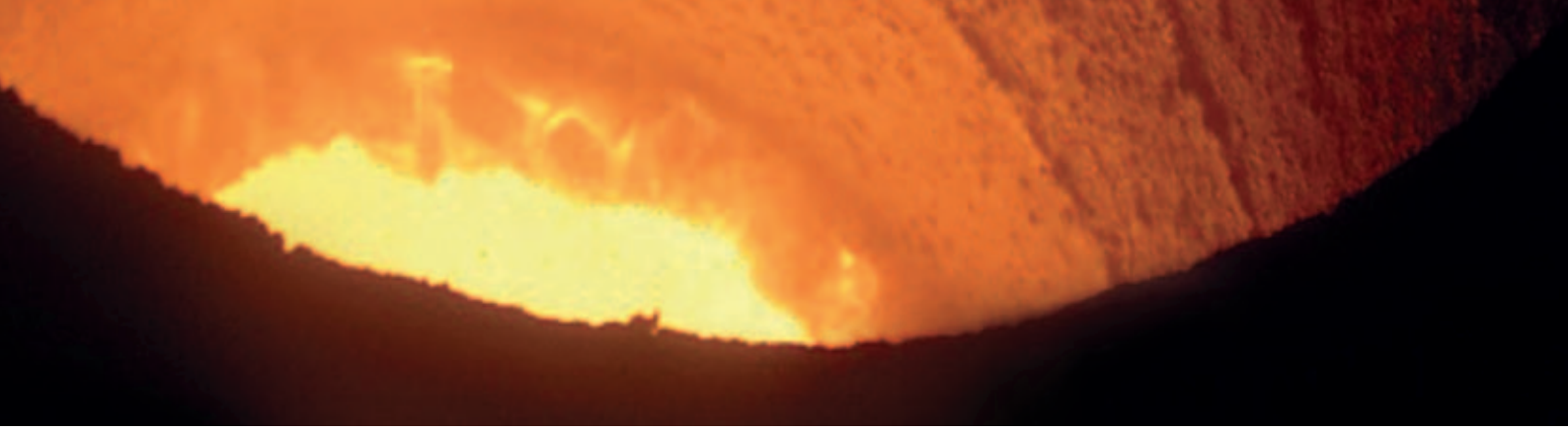
FERROUS AND STEEL

鐵鋼

—



SAINT-GOBAIN



SAINT-GOBAIN CERAMIC MATERIALS

More expertise, more safety | a reliable partnership

As part of the Saint-Gobain group we belong to one of the 100 biggest and most traditional companies worldwide.

Saint-Gobain designs, manufactures and distributes high performance and building innovative solutions to the challenges of growth, energy efficiency and environmental protection.

Excellent refractory materials, products and systems are our strengths.

Our products comply with the highest economic and environmental requirements even under high thermal and complex chemical operating conditions.

Together with our subsidiaries, who specialize in high performance ceramics, as well as R&D centers in France and the U.S.A., we have established a leading team of ceramic experts.

It is know-how and experience resulting from over 100 years development and production of refractory products that makes the difference.

Saint-Gobain's well known NORTON Dry Vibration Monolithics, Castables and even the Ramming Monolithics are used with outstanding success in induction furnaces, ladles and launders in ferrous and non-ferrous foundries.

The castables NORFAST® and NORFLOW® allow a much faster drying or easier casting during installation on site.

It is Saint-Gobain's will, to fulfill all our customers requirements.

We have the following certificates:

Quality
DIN EN ISO 9001

Environment
DIN EN ISO 14001

Occupational Safety
OHSAS 18001



サンゴバン セラミックマテリアルズ

より多くの専門知識、さらなる安全 | 信頼できるパートナーシップ

サンゴバン・グループの一員として、私たちは世界最大で最も伝統的な企業100社のうちのひとつに選ばれています。

サンゴバンは、成長、エネルギー効率と環境保護の課題に挑戦し、高機能で革新的なソリューションを設計、製造、および供給します。

優れた耐火材料、製品やシステムは、私たちの強みです。

当社の製品は、高温で複雑な化学的動作条件下で、最高の経済性および環境要件を承ります。

高性能耐火物に特化したフランスと米国のグループ会社、ならびに研究開発センターと共に、私たちは耐火物専門家の主要なチームを設立しました。

それは100年を超える開発と、違いのある耐火物製品の製造によるノウハウと経験によります。

サンゴバンの著名なノートン乾式・湿式不定形耐火物、キャストブルは、鉄と非鉄鑄造において誘導炉、取鍋、樋などで優れた成功を収めて使用されています。

キャストブルNORFAST®とNORFLOW®は施工時の優れた速乾性、また容易なキャストリングを可能にします。

すべての顧客の要求を果たすこと、それがサンゴバンの意志です。

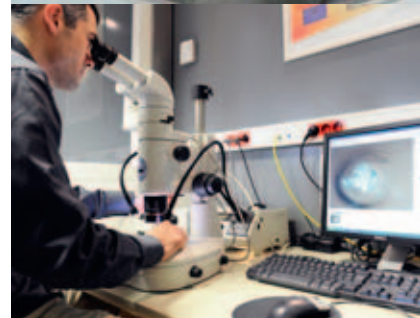
We have the following certificates:

取得証明書：

Quality 品質
DIN EN ISO 9001

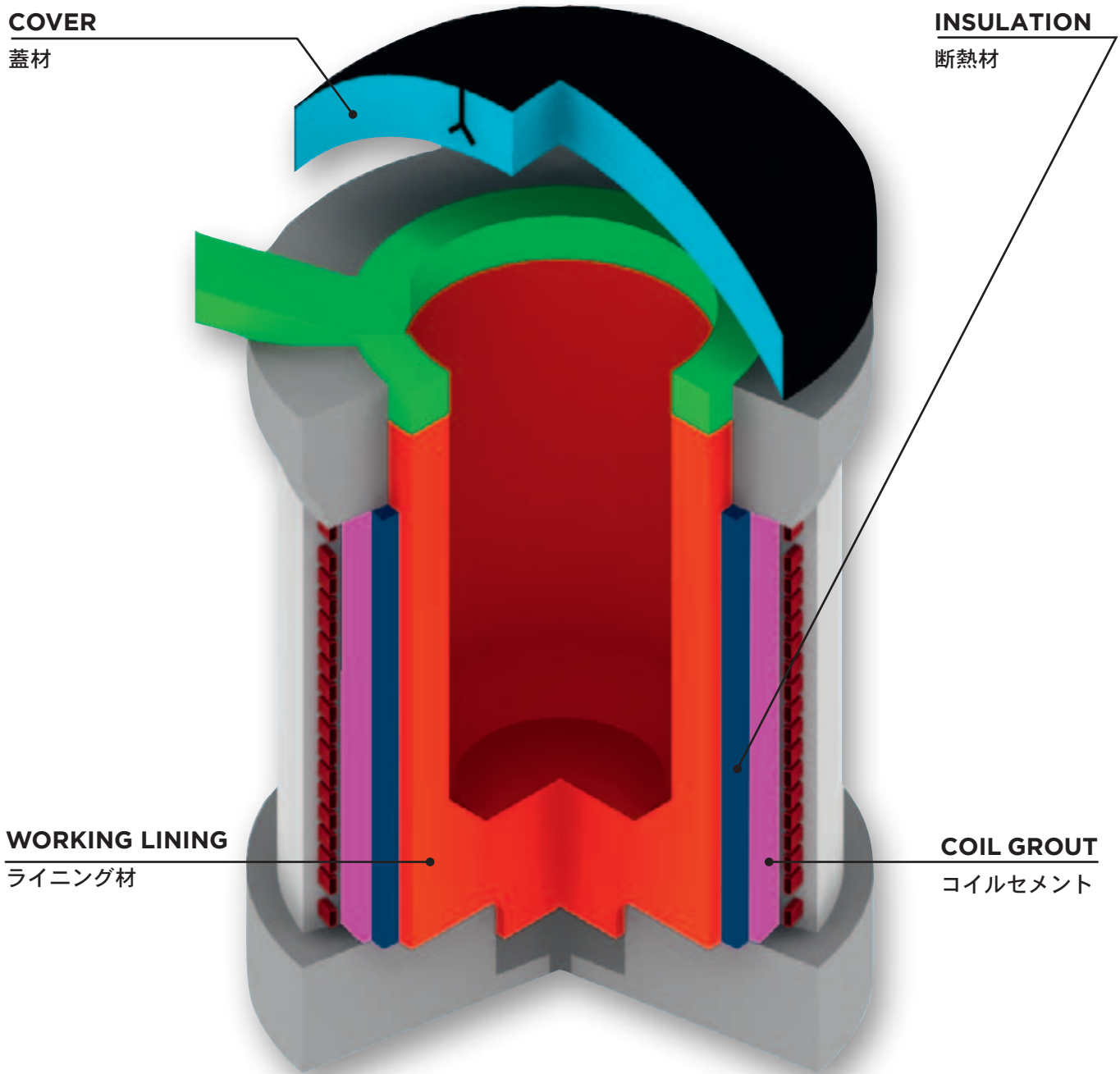
Environment 環境
DIN EN ISO 14001

Occupational Safety 職業上安全
OHSAS 18001



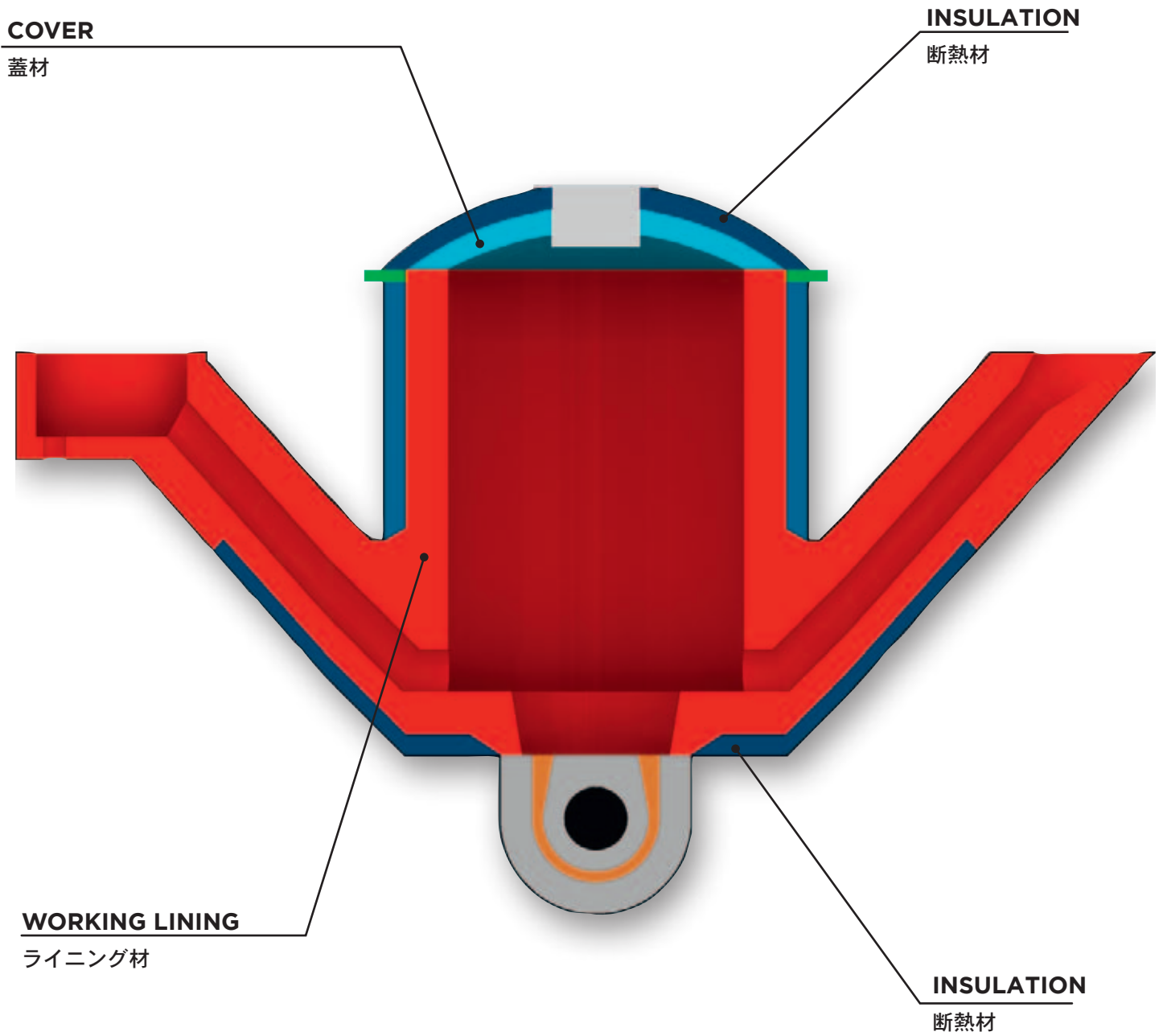
CORELESS INDUCTION FURNACE

コアレス誘導炉



POURING FURNACE

溝形炉



INDUCTOR

インダクター

TOPPING

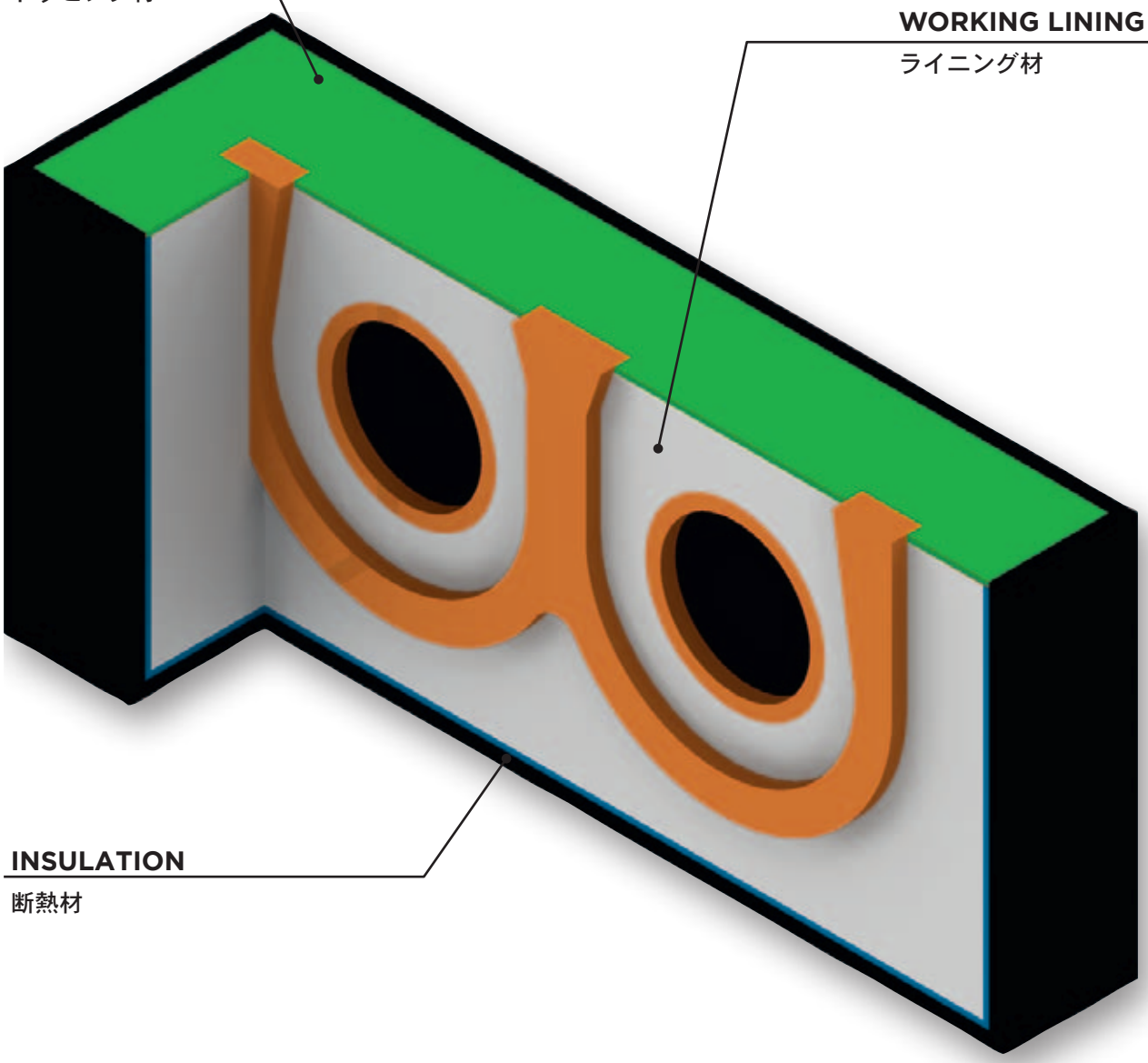
トッピング材

WORKING LINING

ライニング材

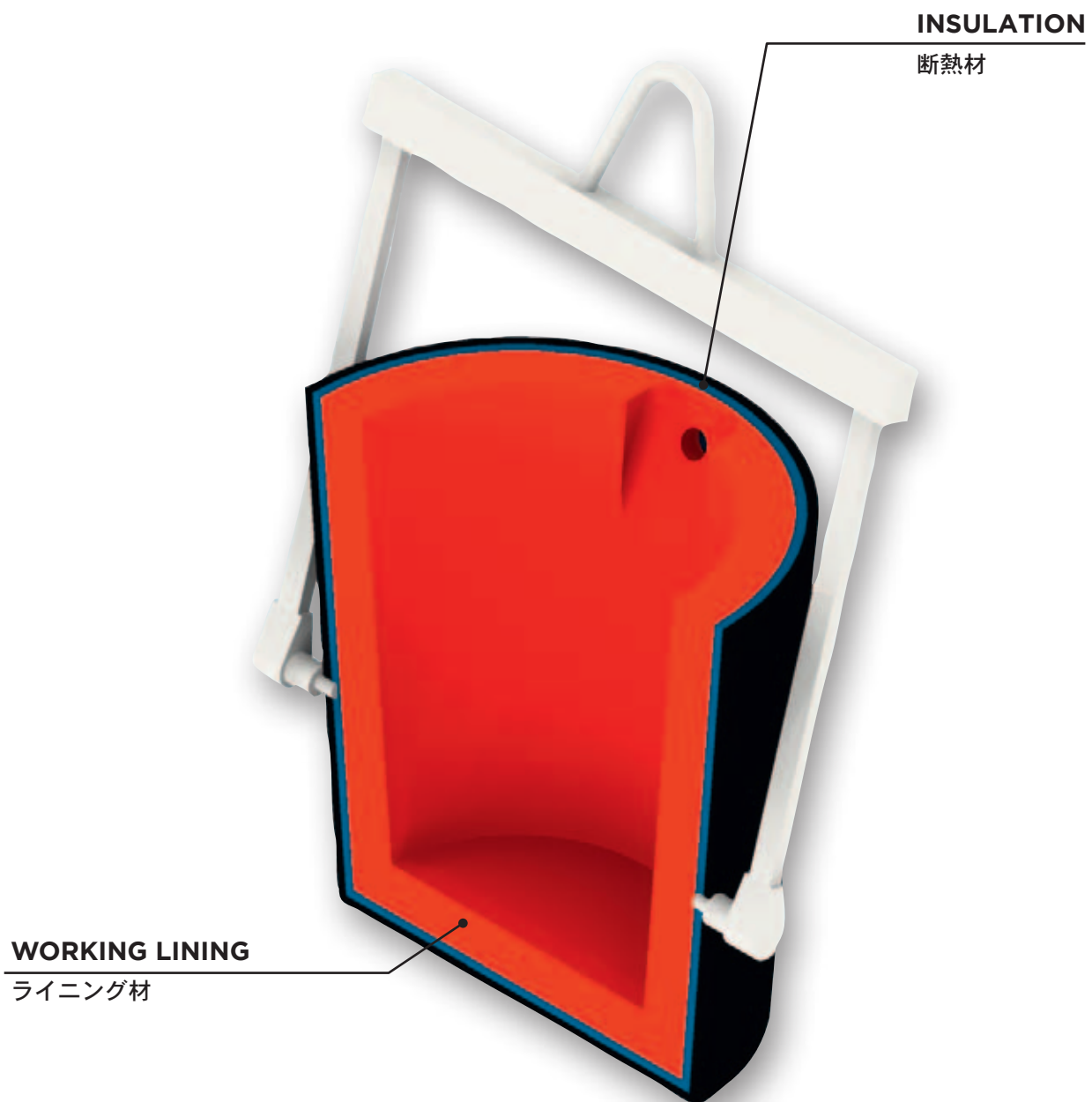
INSULATION

断熱材



LADLE

取鍋



CAST IRON

鑄鉄

	Product name 製品名	Chemical Analysis [%] 化学組成 [%]			Max. Temperature 最高使用温度 [°C]	Material required 必要量 [t/m ³]
		Al ₂ O ₃ [%]	SiO ₂ [%]	MgO [%]		
Coil Grout コイルセメント	CA 337	92	1		1760	3,08
	CA 337 F	92	1		1760	3,08
	Norflow A 337	90	1		1760	3,00
Cover 蓋材	CA 333	95	4		1700	1,60
	CA 1167	87	8		1550	2,80
	CK 1031	62	30		1650	2,55
Working Lining ライニング材	Norfast K 1031	70	26		1650	2,50
	Norflow A 1007	77	5		1750	3,20
	Norflow A 1167	87	8		1550	2,80
	Norflow A 1167 CFR	87	8		1550	2,80
	Norflow K 1031	70	26		1650	2,55
	Norflow K 1061	65	18		1760	2,68
	Norflow A973	83	4,5	SiC 8,0	1760	3,35
	CA 308	95	0,2		1760	2,73
	CA 334	95	0		1800	2,80
	CAF 973	84	4,5		1760	3,29
	CA 1007 / CAF 1007	79	2		1670	3,04
	CA 1012 / CAF 1012	91	6		1670	3,30
	CA 1162 / CAF 1162	90	5		1760	2,72
	CA 1167	87	8		1550	2,80
	CK 1031	62	30		1650	2,55
	CK 1061	53	27		1760	2,61
	LA 873	75	3		1815	2,72
	VA 103	68	0,5	29	1820	2,90
	VA 108	89	7		1800	2,90
	VA 113	93	1	4	1800	2,95
	VA 113 D	89	1	7	1815	3,17
	VA 114	92	1	5	1820	2,96
	VA 114 D	90	1	7	1815	3,07
	VA 115	93	1	4	1820	2,96
	VA 115 D	90	1	4	1815	3,07
	VA 118	91	1	5	1820	2,96
	VA 118 D	88	1	7	1815	3,07
	VA 121 / VA 121 D	87	5		1700	2,95
	VA 122 A / VA 122 D	87	5		1700	2,95
	VA 150	88	1		1815	2,88
	VA 189	87	0,5	11	1780	2,82
	VA 1201	88	4,8		1760	3,08
	VK 1087	68	22		1760	2,53
	VK 1098	73	24		1760	2,40
	VM 140	17	6	71	1600	2,50
	VM 173	5	1,5	92	1980	2,72
	VM 177	24	1,5	71	1750	2,50
	VM 180	14	1,5	82	1870	2,72
	VS 145	69	0,5	28	1820	2,70
	VS 149 C	72		27	1820	2,70
	RA 106 / RA 206	86	11	0	1650	2,95
RA 107 / RA 207	83	14	0	1650	2,95	
RA 111	81	14	1,8	1870	2,95	



CAST IRON

鑄鉄



	Product name 製品名	Chemical Analysis [%] 化学組成 [%]			Max. Temperature 最高使用温度 [°C]	Material required 必要量 [t/m ³]
		Al ₂ O ₃ [%]	SiO ₂ [%]	MgO [%]		
Inductor <i>Induktor</i>	VA 103	68	0,5	29	1820	2,90
	VA 108	89	7		1800	2,90
	VA 113	93	1	4	1800	2,95
	VA 114	92	1	5	1820	2,96
	VA 118	91	1	5	1820	2,96
	VA 157 / VA 157 D	93	4		1800	2,95
	VM 180	14	1,5	82	1870	2,72
	VM 929	69	0,5	28	1820	2,70
	VS 145	72	0,5	27	1820	2,72
Topping トッピング	TA 102 / TA 402	91	5		1800	3,04
	TA 1211	82	13		1760	3,00
	TM 269	12	1	80	1870	2,72
	TS 146	69	0,5	28	1820	2,72
For Repair 補修材	PA 152	92	2		1700	3,04
	PA 452	92	2		1700	3,04
	PA 748	83	15		1760	2,56
	SGP A94 - P	94	2		1750	2,90
	SGP A90 - PF	91	5		1750	2,75
	SGP M70 - P	73	23		1700	2,65
	SGP M70 - PF	73	23		1700	2,65
Insulation/断熱材	on request / 要求に応じて					

STEEL

鑄鋼

	Product name 製品名	Chemical Analysis [%] 化学組成 [%]			Max. Temperature 最高使用温度 [°C]	Material required 必要量 [t/m ³]
		Al ₂ O ₃ [%]	SiO ₂ [%]	MgO [%]		
Coil Grout コイルセメント	CA 337	92	1		1760	3,08
	CA 337 F	92	1		1760	3,08
	CA 339	92	1		1760	2,88
	Norflow A 337	90	1		1760	3,00
Cover 蓋材	CA 333	95	4		1700	1,60
	CA 1167	87	8		1550	2,80
	CK 1031	62	30		1650	2,55
Working Lining ライニング材	Norfast K 1031	70	26		1650	2,50
	Norflow A 1167 CFR	87	8		1550	2,80
	Norflow K 1031	70	26		1650	2,55
	CA 308	95	0,1		1760	2,73
	CA 334	95	0		1800	2,80
	CA 1012 / CAF 1012	91	6		1670	3,30
	CA 1162	90	5		1760	2,72
	CA 1167	87	8		1550	2,80
	CK 1031	62	30		1650	2,55
	VA 103	68	0,5	29	1820	2,90
	VA 113	93	1	4	1800	2,90
	VA 113 D	89	1	7	1815	3,17
	VA 114	93	1	4	1800	2,95
	VA 114 D	90	1	7	1815	3,07
	VA 115	93	1	4	1820	2,96
	VA 115 D	90	1	4	1815	3,07
	VA 118	91	1	5	1820	2,96
	VA 118 D	88	1	7	1815	3,07
	VA 189	87	0,5	11	1780	2,82
	VA 1173 / VA 1173 S	87	0,5	12	1820	3,00
	VA 1205	87	0,5	12	1760	3,05
	VA 1213	87	0,5	12	1820	3,00
	VA 1235	85	0,1	14	1760	3,06
	VA 1248 LG	86		12	1800	2,82
	VA 1247 SF	83		14	1800	2,80
	VA 1249	81		16	1815	
	VA 1250	79		18	1815	
	VA 1251	85		12	1800	2,82
	VM 180	14	1,5	82	1870	2,72
	VS 149 C	72	0,2	27	1820	2,70
	VM 177	24	1,5	71	1750	2,50
	VM 1210	24		73	1760	2,76
VS 145	69	0,5	28	1820	2,70	
VS 149 C	72	0,2	27	1820	2,70	
RM 170	25	5	67	1680	2,72	
RM 774		1	98	1870	2,75	
Topping トッピング	TA 102 / TA 402	91	5		1800	3,04
	TA 1211	82	13		1760	3,04
	PA 452	92	2		1700	3,04
	PM 172	63	7	27	1790	2,24
	PS 149	63	5	28	1820	2,72
	TM 168	23	3	70	1650	2,72
	TM 179	23	1	72	1760	2,75
	TM 269	12	3	80	1870	2,72
	TS 146	70	0,5	28	1820	2,72
	For Repair 補修材	PA 152	92	2		1700
PA 452		92	2		1700	3,04
PA 748		83	15		1760	2,56
PA 1252		90	8,5		1760	2,96
SGP A94 - P		94	2		1750	2,90
SGP A90 - PF		91	5		1750	2,75
SGP M70 - P		73	23		1700	2,65
SGP M70 - PF		73	23		1700	2,65
SGP B85 - P		83	9		1650	2,8
SGP B85 - PF		85	9		1400	2,67
Insulation/断熱材					on request/要求に応じて	

REFRACTORY SOLUTIONS FOR THE FUTURE! WE CAN SOLVE YOUR PROBLEMS!

未来に向けた耐火物ソリューション
私たちはあなたの問題を解決します。

OUR SERVICE FOR YOU!

We offer to you:

- Refractory Products
- Insulating Products
- Installation
- Lining tools
- Heat-flow-calculation
- Engineered heat up and sinter schedules, along with technical advice for all types of furnaces in the industry

貴社に合ったサービスを

私達は提供します

耐火材料

断熱材料

築炉

施工器具

ヒートフロー計算

昇温と焼結の設計の他、
工業炉に対しての技術的
アドバイス

All data, proposals for usage and recommendations given in our literature should be considered as information only. Our liability is limited to such data confirmed by us in writing for special application purposes. However, in no case does this confirmation release the consumer from testing our products for their usability in his own field. The new catalogue replaces all literaturea previously published. The producer reserves the right of improvements of material due to technical developments without preceding notice to the user.

EUROPE

SAINT-GOBAIN INDUSTRIEKERAMIK RÖDENTAL GMBH

Oeslauer Str. 35
96472 Rödental
Germany
TEL: +49 (0) 9563 724 0
FAX: +49 (0) 9563 724 356
Martina.Dierkes@saint-gobain.com

SAINT-GOBAIN INDUSTRIEKERAMIK RÖDENTAL GMBH

Vertriebsbüro Köln:
Concordiaplatz 3
51143 Köln
Germany
TEL: +49 (0) 2203 956 453
FAX: +49 (0) 2203 956 420
Martina.Dierkes@saint-gobain.com

SAINT-GOBAIN CERAMIC MATERIALS

Pol. Ind. Almeda
C/Albert Einstein, 25
08940 - Cornellà de Llobregat (Barcelona)
Spain
TEL: +34 (0) 93 374 59 06
FAX: +34 (0) 93 480 09 86
Victoria.Stoliarova@saint-gobain.com

SAINT-GOBAIN INDUSTRIAL CERAMICS LTD.

Mill Lane, Rainford, St. Helens
WA11 8LP
United Kingdom
TEL: +44 (0) 1744 88 2941
FAX: +44 (0) 1744 884746

SAVOIE RÉFRACTAIRES

4, rue de l'Industrie
BP 76
69633 Vénissieux Cedex
France
TEL: +33 (0) 4 78 78 13 17
FAX: +33 (0) 4 78 78 14 65
Pierre-Yves.Gourssies@saint-gobain.com

SAINT-GOBAIN CERAMICS

c/o Saint Gobain Abrasivi spa
Via per Cesano Boscone 4
20094 Corsico (Mi)
Italy
TEL: +39 02 448 52 98
FAX: +39 02 451 03 493
Fabio.Lacapruccia@saint-gobain.com

NORTH AMERICA

SAINT-GOBAIN CERAMICS AND PLASTICS, INC.

1 New Bond Street
PO BOX 15136
M.S. 530-209
Worcester, MA 01615-0136
USA
TEL: +1 508 795 5703
FAX: +1 508 795 2051
Michael.P.Schnelzer@saint-gobain.com

SOUTH AMERICA / SÜDAMERIKA

SAINT-GOBAIN DO BRASIL PRODUCTOS INDUSTRIAIS E PARA CONSTRUÇÃO LTDA.

Av. Independencia, 7031
Jardim São Matheus
13280-000 Vinhedo-Sp
Brazil
TEL: + 55 19 21278674
FAX: + 55 19 2127 8548

ASIA-PACIFIC

SAINT-GOBAIN KK

26, Shimo-jinya Cho
Seto-Shi
Aichi 489-0051
Japan
TEL: +81 561 82 2485
FAX: +81 561 82 2384

SAINT-GOBAIN ADVANCED CERAMICS CO., LTD.

Building 7, Lane 88, Yuan Shan Rd.,
Xin Zhuang Industrial Zone,
Shanghai 201108
China
TEL: +86 21 6489 9993
FAX: +86 21 6442 2667

GRINDWELL NORTON LTD.

Devanahalli Road
Off Old Madras Road
Bangalore 560 049
India
TEL: + 91 (0) 80 309 78 565
FAX: + 91 (0) 80 284 78 582

GRINDWELL NORTON LTD.

Survey No. 54/1/1, 55/2, 56 & 57
PO Box No.: 45, Village: GET Mulvala-389
350
Taluka: Halol, District: Panchmahals, Gujarat
India
TEL: + 91 (0) 2676 300085
FAX: + 91 (0) 2676 300086

www.refractories.saint-gobain.com