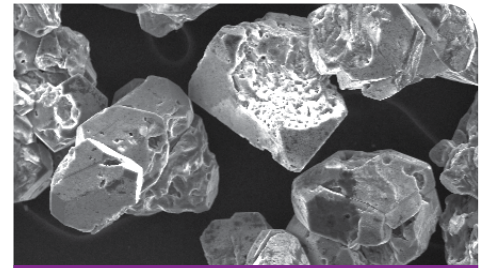


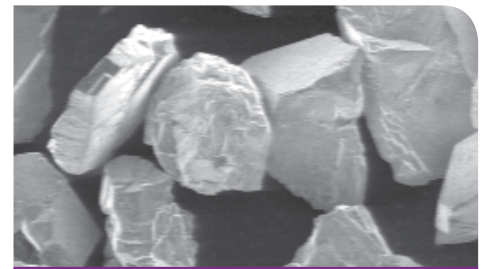
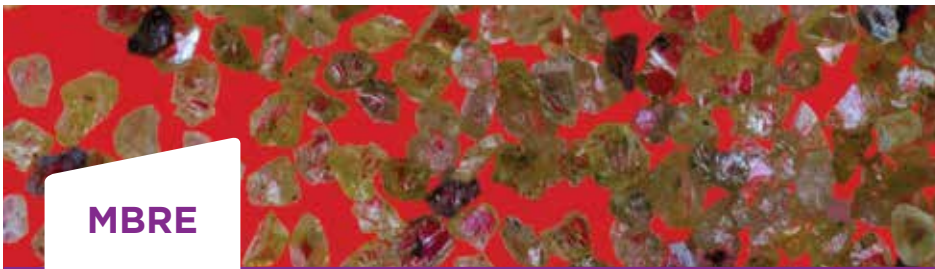


ENGINEERED PARTICLES / DIAMOND

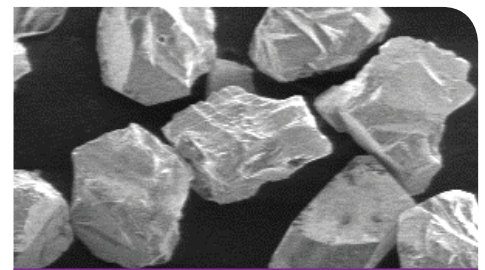
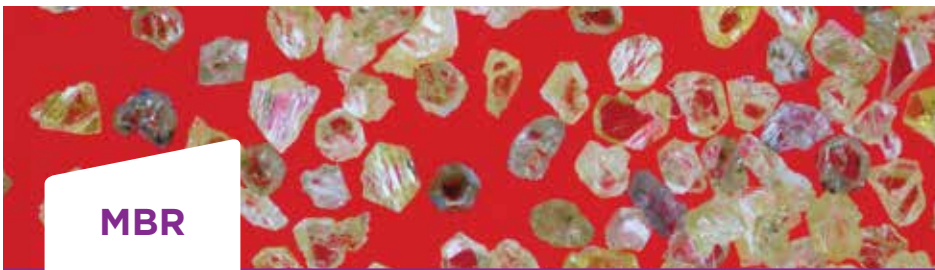
Mesh Diamond Powders — RB, MBRE, MBR



A semi-blocky friable diamond that continually breaks down, forming new sharp cutting edges when used on a wide variety of non-ferrous materials for cutting tools, including cermets. It is used in both phenolic resin and glassy vitrified bond systems where low power and cost are primary considerations.



An angular shaped strong crystal with some friable particles used when a stronger crystal than RB is required and price is the primary concern. It is widely used for large resin bonded wheels where abrasive cost exceeds 25% of the total wheel cost, such as centerless and chamfering PCD grinding.



A sharp angular shaped crystal very similar to MBRE, but slightly more consistent in particle shape with a cleaner surface. This is the best choice for both filled and non-filled phenolic bond systems used for wheels in the manufacture of rotary and insert tools.

 **ISO CERTIFIED**
9001:2008 and
14001:2004

 **ABC**
Superabrasives

 **WARREN**
Superabrasives


USA
1401 East Lackawanna Street
Mid-Valley Industrial Park
Olyphant, PA 18447
Tel: +1 570 383 3261 Fax: +1 570 383 3218


CHINA
No. 8, Xinkai Street
Econ. Dev. Zone 056107
Handan, Hebei, China
Tel: +86 310 806 6053 Fax: +86 310 806 6022

surfaceconditioning.saint-gobain.com

SURFACE CONDITIONING

©2017 Saint-Gobain Surface Conditioning, MESHDIAMOND1-11/17-HIVE


SAINT-GOBAIN