

SAINT-GOBAIN SEALS



OmniSeal®
Sealing Control

OmniSeal®

METAL BOSS SEALS



Critical parts
making THE difference



PRECISE
FIT

LIFETIME
CONFIDENCE



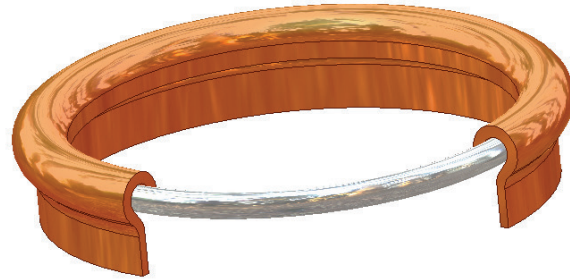
SAINT-GOBAIN



OmniSeal®

Metal Boss Seal

**Outstanding performance advantages
in port-to-tube fitting applications**



Description

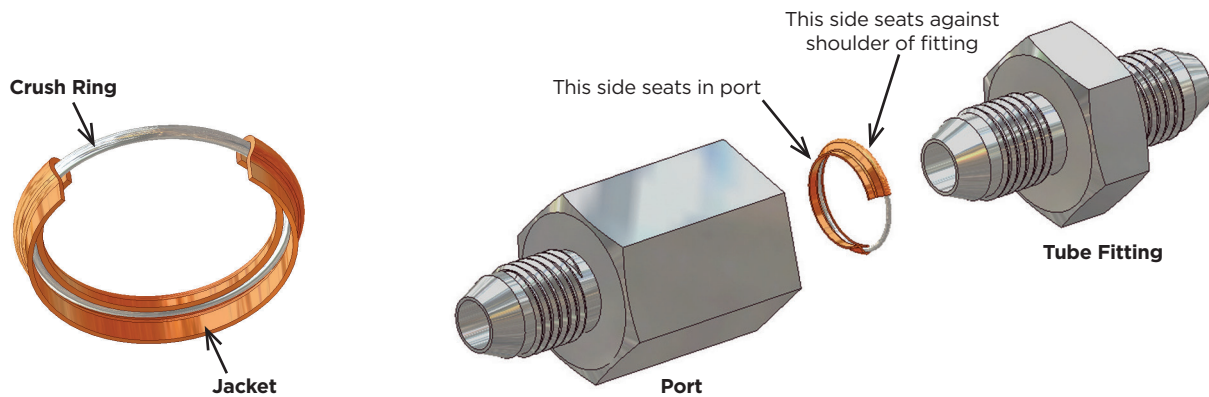
Saint-Gobain Seals' metal boss seal is a pressure loaded, positive sealing device designed for service in AN (MS, MC) port-to-tube fitting in applications beyond the capabilities of available elastomer o-rings. The initial seal is accomplished by means of the crush ring which mates the coating of the seal to the surfaces of the port and tube fitting. Once the seal is installed, it is spring loaded and pressure sensitive to insure sealing over a wide range of temperature and pressure. The advantages of both crush and pressure sensitive type seals are inherent in the design of the metal boss seal.

Advantages

- Unlimited shelf life
- Temperature capability from -453°F to 1500°F
- Designed to operate within a wide temperature range
- Compatible with corrosive and radioactive fluids
- Sealing force increases with increased pressure
- Allows metal-to-metal seat of fittings
- Permits full thread engagement
- Non-permeable
- Fits standard AN, MS and MC hardware
- Seal pressure limit exceeds proof pressure of hardware

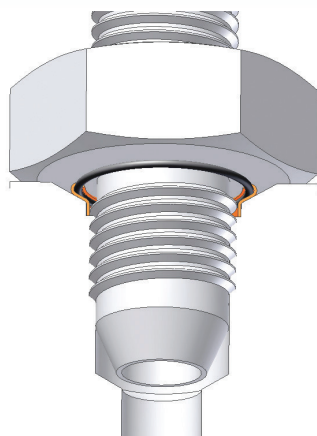
Applications

- Cryogenic
- Aircraft
- Vacuum
- Chemical
- Steam Systems
- Nuclear Plants
- Power Plants
- Refineries



Installation

1. Lightly lubricate fitting treads, boss cavity, and top of seal with suitable lubricant except where prohibited by cleaning requirements.
2. Place seal into threads of the fitting and assemble into mating port.
3. Apply recommended torque. If no lubricant is used a higher torque may be required to bottom the fitting against the boss.



Ordering as easy as 1-2-3

Seal Part Number should be written as follows:

10061-XX-X-X

1 2 3

Select the Size Dash Number

- 02** AND 10050-2/MS33649-2
- 03** AND 10050-3/MS33649-3
- 04** AND 10050-4/MS33649-4
- 05** AND 10050-5/MS33649-5
- 1** **06** AND 10050-6/MS33649-6
- 08** AND 10050-8/MS33649-8
- 10** AND 10050-10/MS33649-10
- 12** AND 10050-12/MS33649-12
- 16** AND 10050-16/MS33649-16

Select the Coating

TEMPERATURE RANGE*

- 0** Teflon® -423°F to 500°F
- 1** Silver -320°F to 1,300°F
- 2** Gold -423°F to 1,400°F
- 3** Nickel -453°F to 1,500°F
- 4** Copper -423°F to 1,500°F
- 5** No Coating** -453°F to 1,500°F

* Temperatures given are achieved with CRES 321/302. Inconel® available for temperature and corrosion resistance.

** Uncoated seals may require polishing of mating surfaces.

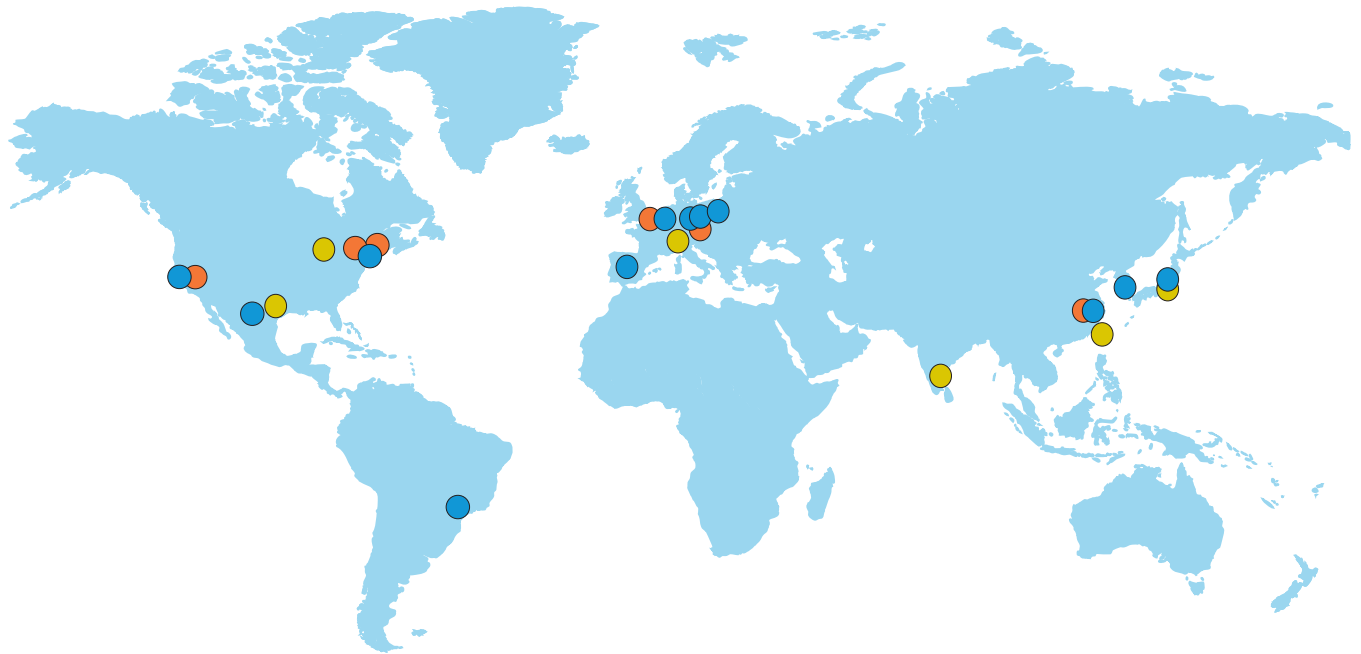
Select the Materials

	CRUSH RING	JACKET
3 0	302 Stainless steel Cond. A	321 Stainless steel AMS 5510
1	Inconel® 718 Annealed	Inconel® 718 Annealed, AMS 5596

Recommended Torque

BOSS SEAL	STAINLESS STEEL (in. - lbs.)	ALUMINUM (in. - lbs.)
10061 - 02	120 - 165	90 - 100
10061 - 03	200 - 250	110 - 120
10061 - 04	300 - 350	135 - 150
10061 - 05	350 - 420	180 - 200
10061 - 06	420 - 480	270 - 300
10061 - 08	600 - 720	450 - 500
10061 - 10	960 - 1080	650 - 700
10061 - 12	1380 - 1500	900 - 1000

A Global Network of Expertise and Service









● Manufacturing and sales locations
 ● Sales only locations
 ● R&D Centers

Manufacturing and sales locations

- | | |
|--|---|
| <p> 7301 Orangewood Ave.
Garden Grove, CA USA 92841
Phone: +1-800-544-0080</p> <p> 386 Metacom Avenue
Bristol, RI USA 02809
Phone: +1-401-253-2000</p> <p> Industria Aeroespacial 3601
Parque Industrial Saltillo-Ramos
Ramos Arizpe, Coahuila, Mexico 25900
Phone: +52-844-866-1200</p> <p> Am Nordkanal 37
47877 Willich, Germany
Phone: +49 2154-600</p> <p> Am Herrnberg 8, 98724 Neuhaus am
Rennweg, Germany
Phone: +49 3679 7913-0</p> <p> Dertinger Weg 10, 97877 Wertheim
Bettingen, Germany
Phone: +49 9342 9266-0</p> <p> Heiveldekens 22
2550 Kontich, Belgium
Phone: +32 3-458-2828</p> | <p> Av. Independencia, 7031-Jd. Sao Matheus
Sao Paulo, Vinhedo, Brazil 13280
Phone: +55 19-2127-8521</p> <p> 45-46 Avda Ebro Pol El Sequero
26150 Agoncillo, La Rioja, Spain
Phone: +34 941-29-20-53</p> <p> ul. Norton 1
62-600 Kolo, Poland
Phone: +48 63-26-17-281</p> <p> 10801-5, Haramura
Suwa, Japan 391-0106
Phone: +81 266-79-6400</p> <p> 8th FL., KFAS Bldg, 211
Teheran-ro, Gangnam-Gu
Seoul, South Korea 06141
Phone: +82-2-508-8200</p> <p> 1468 Kun Yang Road
Minhang Development Zone
Shanghai, China
Phone: +86 21-5472-1568</p> |
|--|---|

Sales only locations

- | |
|---|
| <p> Detroit, MI USA
Phone (office): +1-248-834-2504
Phone (mobile): +1-248-420-8918</p> <p> 12941 North Freeway, Suite 226
Houston, TX USA 77060
Phone: +1-832-666-2169</p> <p> V.le Colleoni 3
Palazzo Taurus 2
20864 Agrate Brianza (MI), Italy
Phone: +39 039 657891</p> <p> Grindwell Norton Limited
Devanahalli Road, Via Old Madras Road
Bangalore, India 560049
Phone: +91 80 30978888</p> <p> Fuchu South Building 6F,
1-40 Miyamachi
Fuchu-City, Tokyo, Japan 183-0023
Phone: +81 42 352 2100</p> <p> Saint-Gobain Advanced
Materials Co., Ltd
3F-1, No. 147, Section 2, Jianguo North Road
Taipei, Taiwan 104
Phone: +886-2-2503-4201</p> |
|---|

sealsmarketing@saint-gobain.com

www.seals.saint-gobain.com

OmniSeal®, Rulon®, Meldin® and Fluoroloy® are registered trademarks of Saint-Gobain Performance Plastics Corporation. Limited Warranty: For a period of 6 months from the date of first sale, Saint-Gobain Performance Plastics Corporation warrants this product(s) to be free from defects in manufacturing. Our only obligation will be to provide replacement product for any portion proving defective, or at our option, to refund the purchase price thereof. User assumes all other risks, if any, including the risk of injury, loss or damage, whether direct or consequential, arising out of the use, misuse, or inability to use this product(s). SAINT-GOBAIN PERFORMANCE PLASTICS DISCLAIMS ANY AND ALL OTHER WARRANTIES, EXPRESSED OR IMPLIED, INCLUDING THE IMPLIED WARRANTIES OF MERCHANTABILITY AND FITNESS FOR A PARTICULAR PURPOSE.

NOTE: Saint-Gobain Performance Plastics Corporation does not assume any responsibility or liability for any advice furnished by it, or for the performance or results of any installation or use of the product(s) or of any final product into which the product(s) may be incorporated by the purchaser and/or user. The purchaser and/or user should perform its own tests to determine the suitability and fitness of the product(s) for the particular purpose desired in any given situation.

