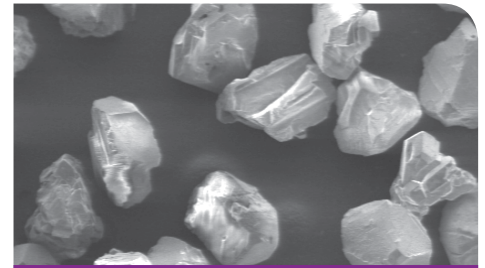


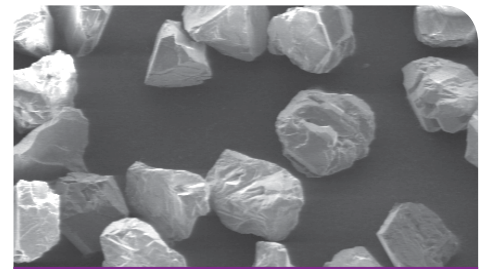
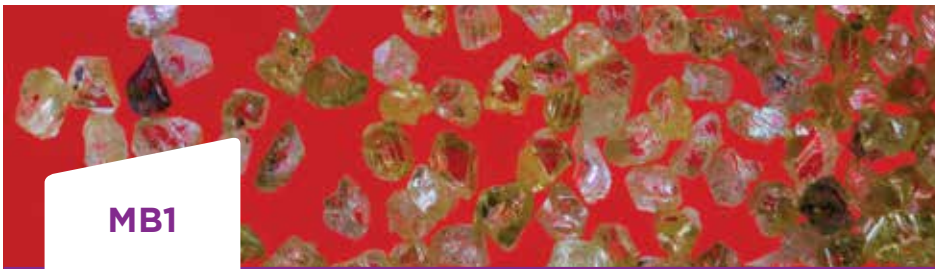


ENGINEERED PARTICLES / MESH DIAMOND POWDERS

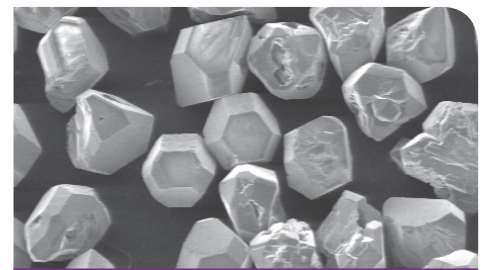
# Mesh Diamond Powders — MB2, MB1, SGW30



A diamond crystal, less angular than MBR and with fewer weak particles, recommended for more demanding grinding applications requiring the best balance of free cutting and wheel life. Available with Ni30, Ni56 and Cu50 coatings for stronger phenolic and some polyimide bond systems used in steel/carbide combinations and polycrystalline tools.



A semi-blocky, strong diamond shape with sharp edges and excellent impact resistance required for harder materials.



A premium metal bond type mesh diamond, slightly stronger and less friable than MB1 used primarily in general purpose, low-to-medium force bronze metal bonded grinding applications where sharp edges and good impact resistance are required. Glass beveling, roughing and semi-finishing as well as low production automotive glass grinding are common applications for SGW30. It is also used in many electroplated applications, including grinding glass, quartz and ceramic materials. Similar in price to SGW40 and SGW50.



**ISO CERTIFIED**  
9001:2008 and  
14001:2004



1401 East Lackawanna Street  
Mid-Valley Industrial Park  
Olyphant, PA 18447

USA

Tel: +1 570 383 3261 Fax: +1 570 383 3218

[surfaceconditioning.saint-gobain.com](http://surfaceconditioning.saint-gobain.com)

**SURFACE CONDITIONING**

